



# MARINA PALMS

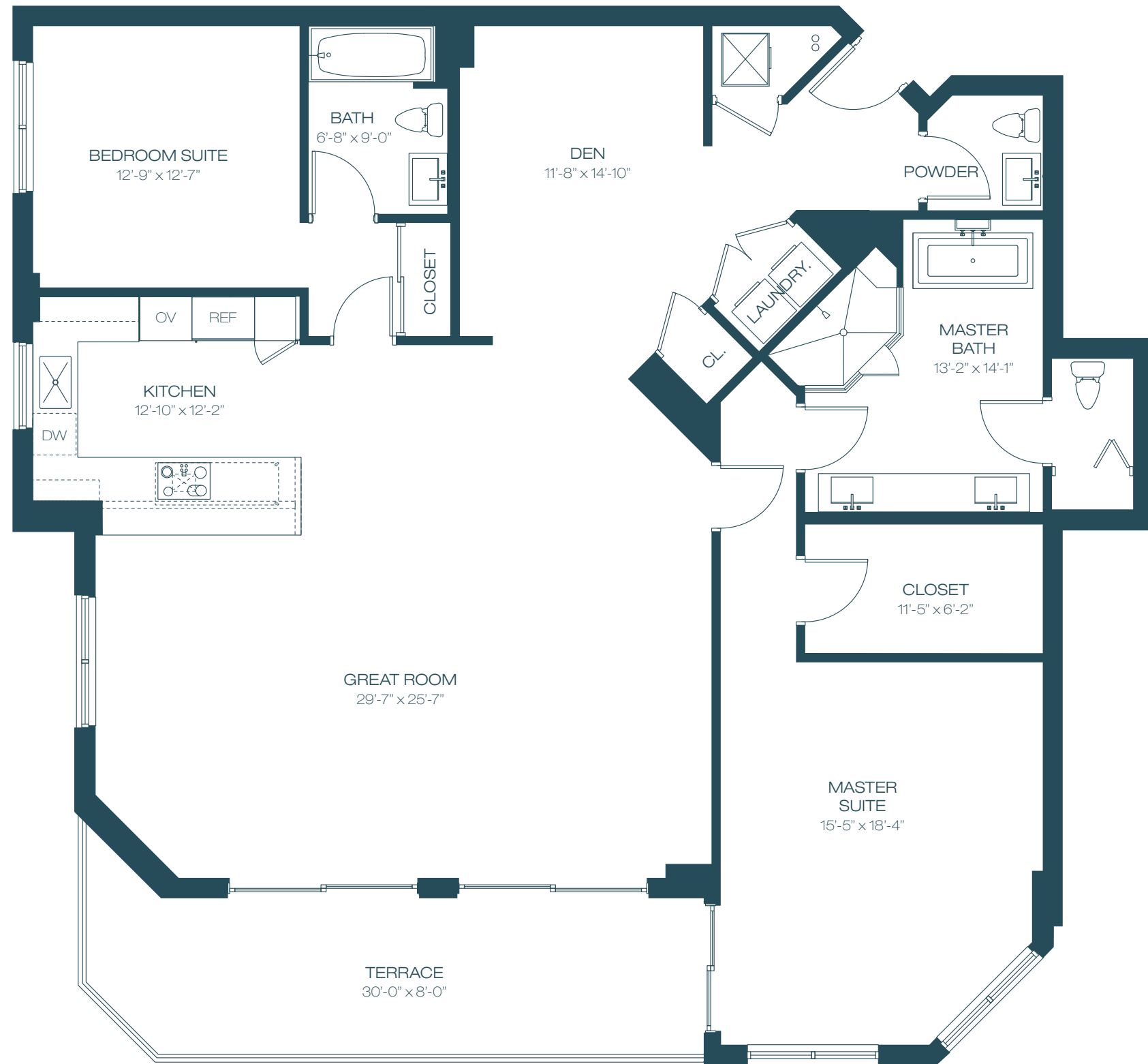
YACHT CLUB & RESIDENCES

M I A M I

17201 Biscayne Boulevard, North Miami Beach, FL 33160

P 1 866 990 1800 | [MarinaPalms.com](http://MarinaPalms.com)

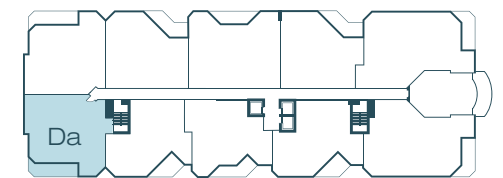
---



**UNIT Da**

2	BEDROOMS + DEN	2.5	BATHROOMS
INTERIOR	2,156 SF	200 M <sup>2</sup>	
TERRACE	241 SF	22 M <sup>2</sup>	
TOTAL	2,397 SF	223 M <sup>2</sup>	

17201 BISCAYNE BOULEVARD, NORTH MIAMI BEACH, FL 33160 P 1 866 990 1800 MARINAPALMS.COM



N  
↑  
KEY PLAN - UNIT LOCATION

INTRACOASTAL

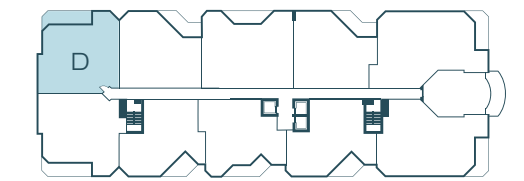
INTRACOASTAL



**UNIT D**

2	BEDROOMS + DEN	2.5	BATHROOMS
INTERIOR		2,114 SF	196 M <sup>2</sup>
TERRACE		241 SF	22 M <sup>2</sup>
<b>TOTAL</b>		<b>2,355 SF</b>	<b>218 M<sup>2</sup></b>

17201 BISCAYNE BOULEVARD, NORTH MIAMI BEACH, FL 33160 P 1 866 990 1800 MARINAPALMS.COM

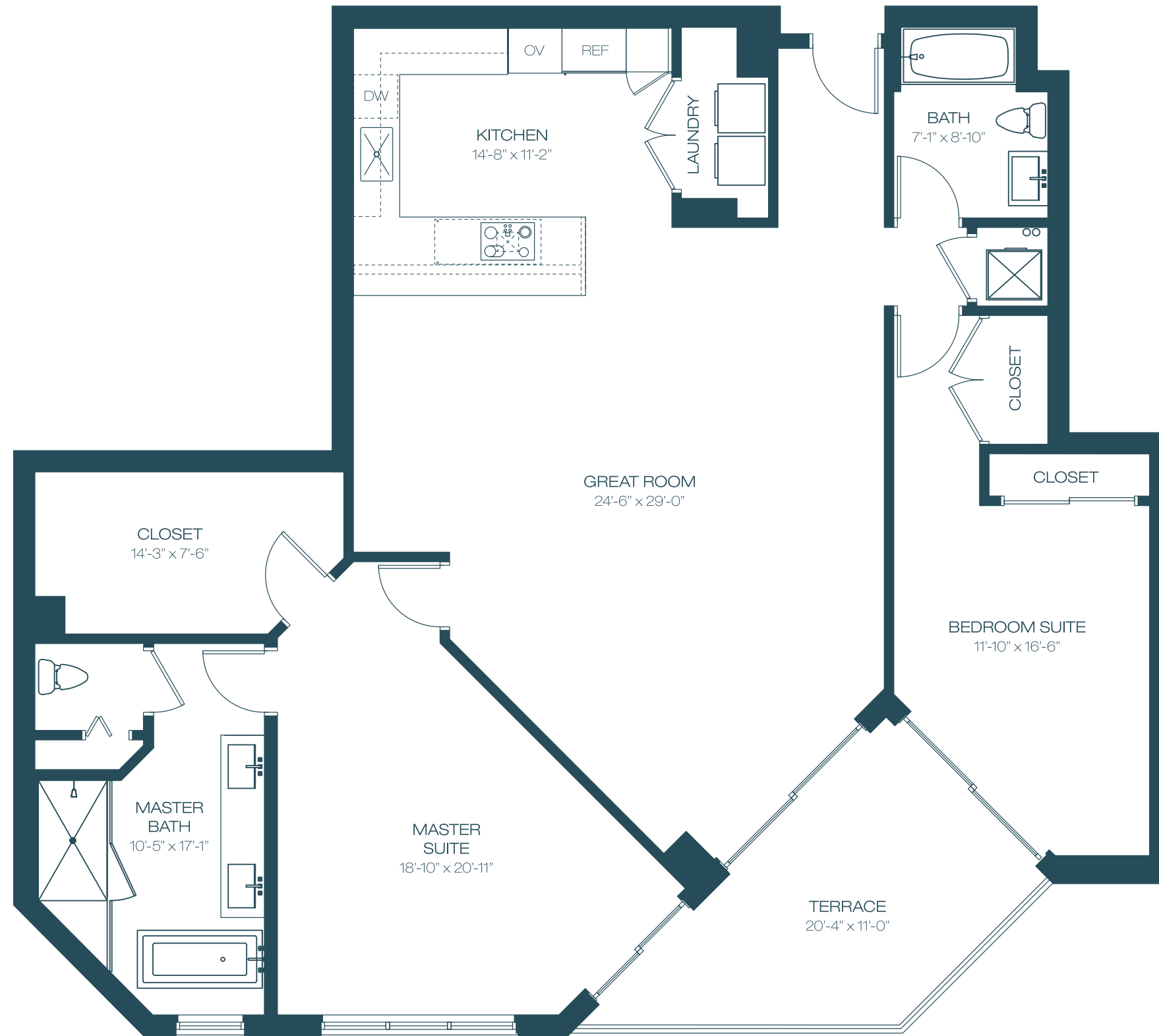


N  
↑  
KEY PLAN - UNIT LOCATION

INTRACOASTAL

INTRACOASTAL

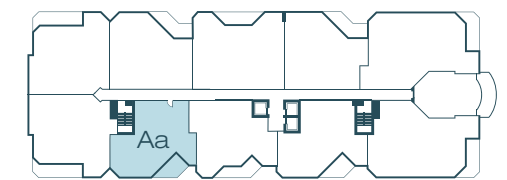
All dimensions are approximate and all floor plans and development plans are subject to change. This floor plan represents the typical floor plan for the residence type indicated and is provided for informational purposes only. The actual floor plan of the residence may differ. All features listed for the residences are representative only, and the Developer reserves the right, without notice to or approval by the Buyer, to make changes or substitutions of equal or better quality for any features, materials and equipment. All dimensions are taken to the outside finished surface of the exterior walls, and to the centerline of interior demising walls, and vary from the dimensions that would be determined based upon the description of the "Unit" set forth in the Declaration of Condominium (which generally includes only the interior airspace between the unfinished interior surfaces of the walls bounding the unit). All sketches, renderings, graphic materials, plans, specifications, terms, conditions, and statements contained in this brochure are proposed and conceptual only and do not necessarily reflect the final plans and specifications for the development. Further, developer reserves the right to modify, revise, or withdraw any or all of sale in its sole discretion and without prior notice.



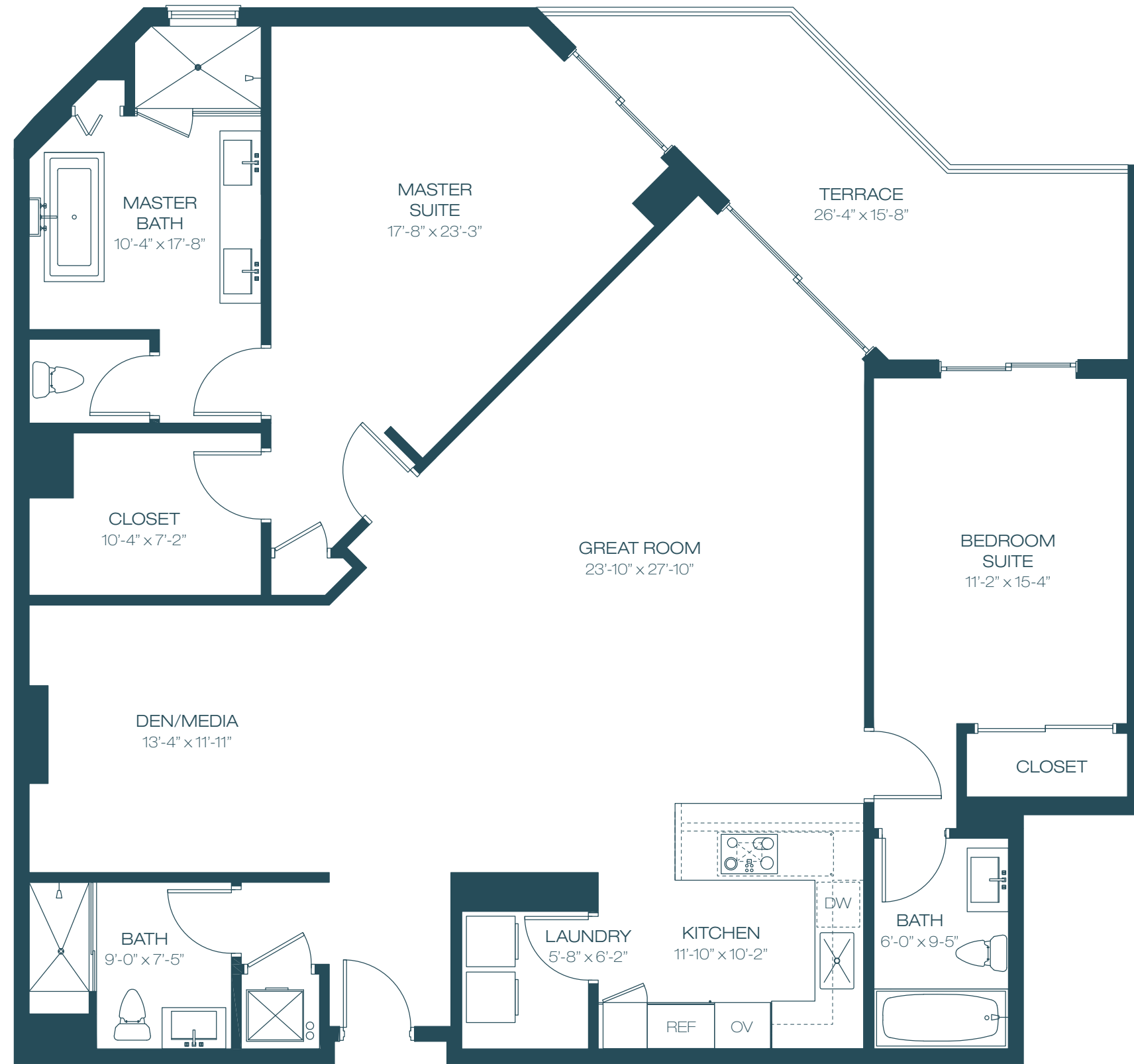
**UNIT Aa**

2	BEDROOMS	2	BATHROOMS
INTERIOR	1,821 SF	169 M <sup>2</sup>	
TERRACE	169 SF	16 M <sup>2</sup>	
-----			
TOTAL	1,990 SF	185 M <sup>2</sup>	

17201 BISCAYNE BOULEVARD, NORTH MIAMI BEACH, FL 33160 P 1 866 990 1800 MARINAPALMS.COM



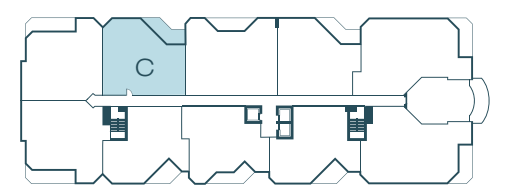
N  
↑  
KEY PLAN - UNIT LOCATION



**UNIT C**

2	BEDROOMS + DEN	3	BATHROOMS
INTERIOR	1,961 SF		182 M <sup>2</sup>
TERRACE	210 SF		20 M <sup>2</sup>
<hr/>			
TOTAL	2,171 SF		202 M <sup>2</sup>

17201 BISCAYNE BOULEVARD, NORTH MIAMI BEACH, FL 33160 P 1 866 990 1800 MARINAPALMS.COM

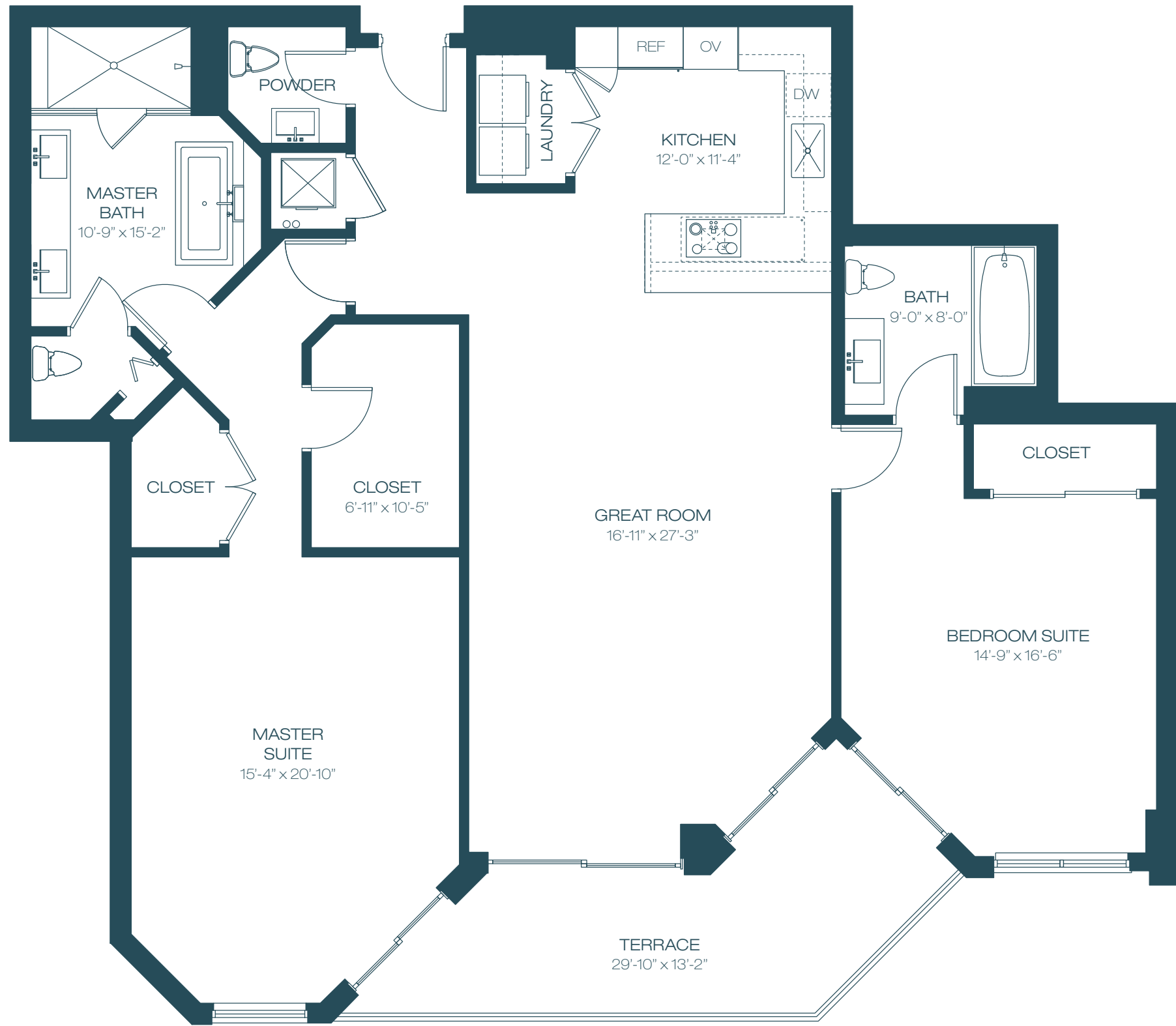


N  
↑  
KEY PLAN - UNIT LOCATION

INTRACOASTAL

INTRACOASTAL

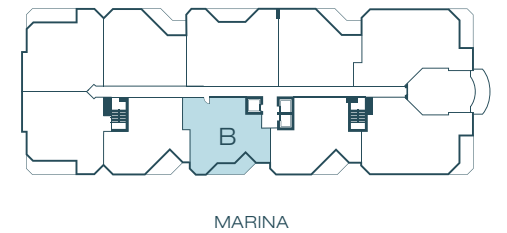
All dimensions are approximate and all floor plans and development plans are subject to change. This floor plan represents the typical floor plan for the residence type indicated and is provided for informational purposes only. The actual floor plan of the residence may differ. All features listed for the residences are representative only, and the Developer reserves the right, without notice to or approval by the Buyer, to make changes or substitutions of equal or better quality for any features, materials and equipment. All dimensions are taken to the outside finished surface of the exterior walls, and to the centerline of interior demising walls, and vary from the dimensions that would be determined based upon the description of the "Unit" set forth in the Declaration of Condominium (which generally includes only the interior airspace between the unfinished interior surfaces of the walls bounding the unit). All sketches, renderings, graphic materials, plans, specifications, terms, conditions, and statements contained in this brochure are proposed and conceptual only and do not necessarily reflect the final plans and specifications for the development. Further, developer reserves the right to modify, revise, or withdraw any or all of sale in its sole discretion and without prior notice.



**UNIT B**

2	BEDROOMS	2.5	BATHROOMS
INTERIOR		1,873 SF	174 M <sup>2</sup>
TERRACE		198 SF	18 M <sup>2</sup>
TOTAL		2,071 SF	192 M <sup>2</sup>

17201 BISCAYNE BOULEVARD, NORTH MIAMI BEACH, FL 33160 P 1 866 990 1800 MARINAPALMS.COM

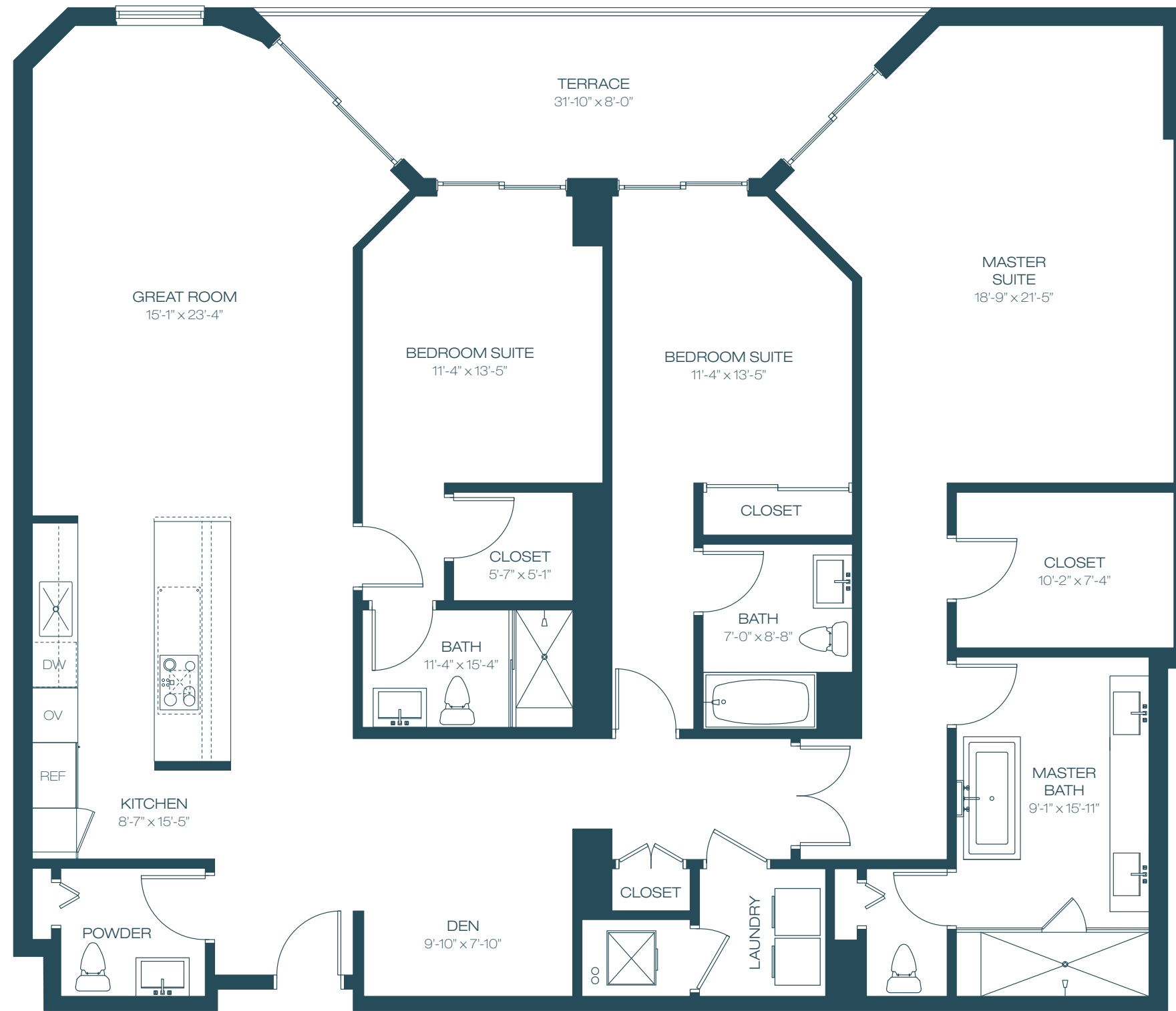


N  
↑  
KEY PLAN - UNIT LOCATION

INTRACOASTAL

INTRACOASTAL

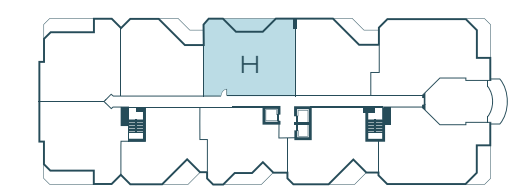
All dimensions are approximate and all floor plans and development plans are subject to change. This floor plan represents the typical floor plan for the residence type indicated and is provided for informational purposes only. The actual floor plan of the residence may differ. All features listed for the residences are representative only, and the Developer reserves the right, without notice to or approval by the Buyer, to make changes or substitutions of equal or better quality for any features, materials and equipment. All dimensions are taken to the outside finished surface of the exterior walls, and to the centerline of interior demising walls, and vary from the dimensions that would be determined based upon the description of the "Unit" set forth in the Declaration of Condominium (which generally includes only the interior airspace between the unfinished interior surfaces of the walls bounding the unit). All sketches, renderings, graphic materials, plans, specifications, terms, conditions, and statements contained in this brochure are proposed and conceptual only and do not necessarily reflect the final plans and specifications for the development. Further, developer reserves the right to modify, revise, or withdraw any or all of sale in its sole discretion and without prior notice.



**UNIT H**

3	BEDROOMS + DEN	3.5	BATHROOMS
INTERIOR	2,332 SF		217 M <sup>2</sup>
TERRACE	190 SF		18 M <sup>2</sup>
<hr/>			
TOTAL	2,522 SF		234 M <sup>2</sup>

17201 BISCAYNE BOULEVARD, NORTH MIAMI BEACH, FL 33160 P 1 866 990 1800 MARINAPALMS.COM

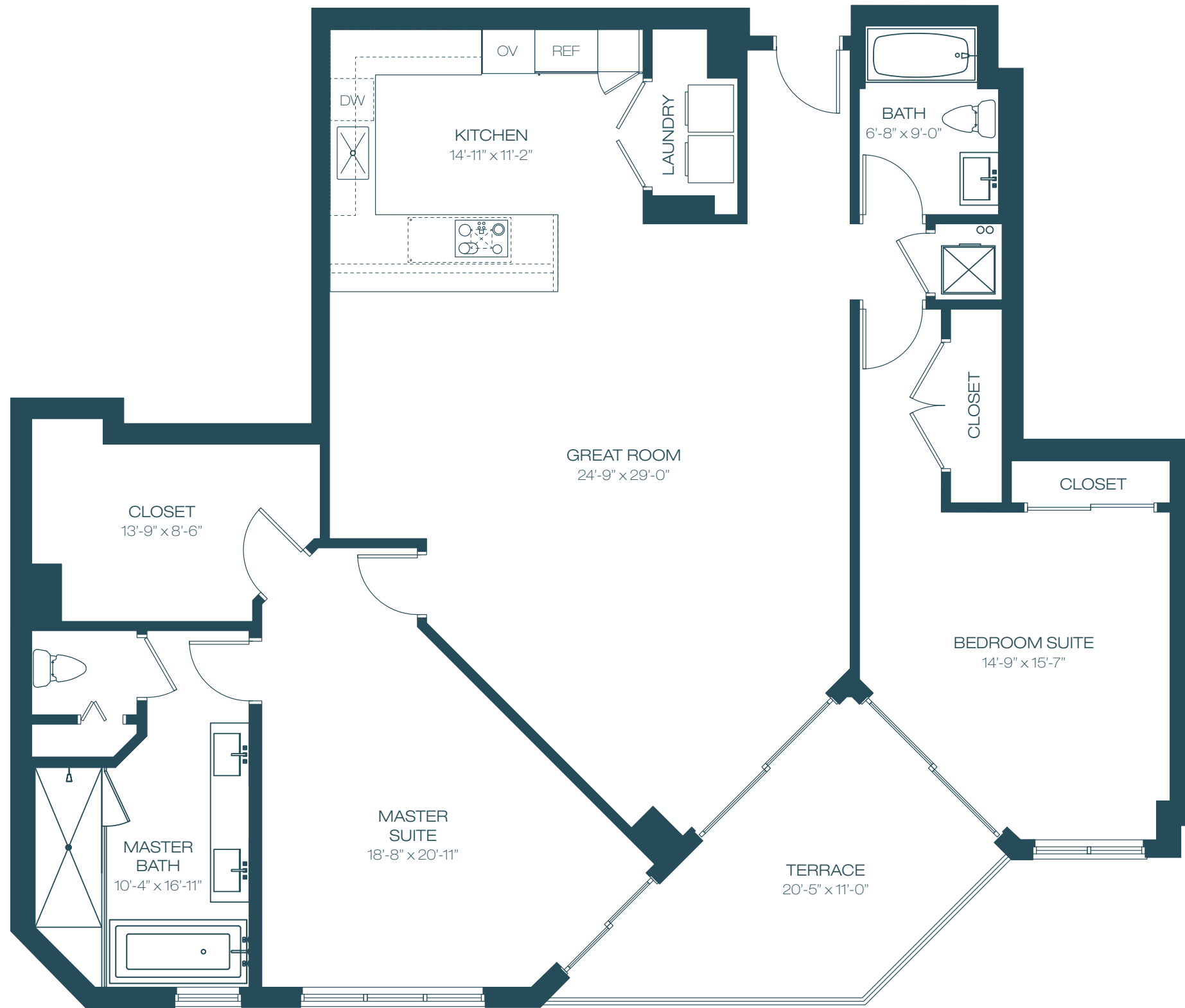


N  
↑  
KEY PLAN - UNIT LOCATION

INTRACOASTAL

INTRACOASTAL

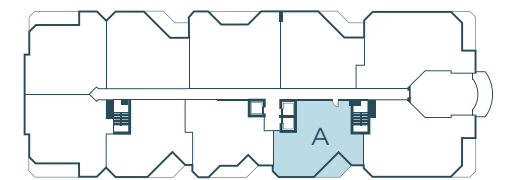
All dimensions are approximate and all floor plans and development plans are subject to change. This floor plan represents the typical floor plan for the residence type indicated and is provided for informational purposes only. The actual floor plan of the residence may differ. All features listed for the residences are representative only, and the Developer reserves the right, without notice to or approval by the Buyer, to make changes or substitutions of equal or better quality for any features, materials and equipment. All dimensions are taken to the outside finished surface of the exterior walls, and to the centerline of interior demising walls, and vary from the dimensions that would be determined based upon the description of the "Unit" set forth in the Declaration of Condominium (which generally includes only the interior airspace between the unfinished interior surfaces of the walls bounding the unit). All sketches, renderings, graphic materials, plans, specifications, terms, conditions, and statements contained in this brochure are proposed and conceptual only and do not necessarily reflect the final plans and specifications for the development. Further, developer reserves the right to modify, revise, or withdraw any or all of sale in its sole discretion and without prior notice.



**UNIT A**

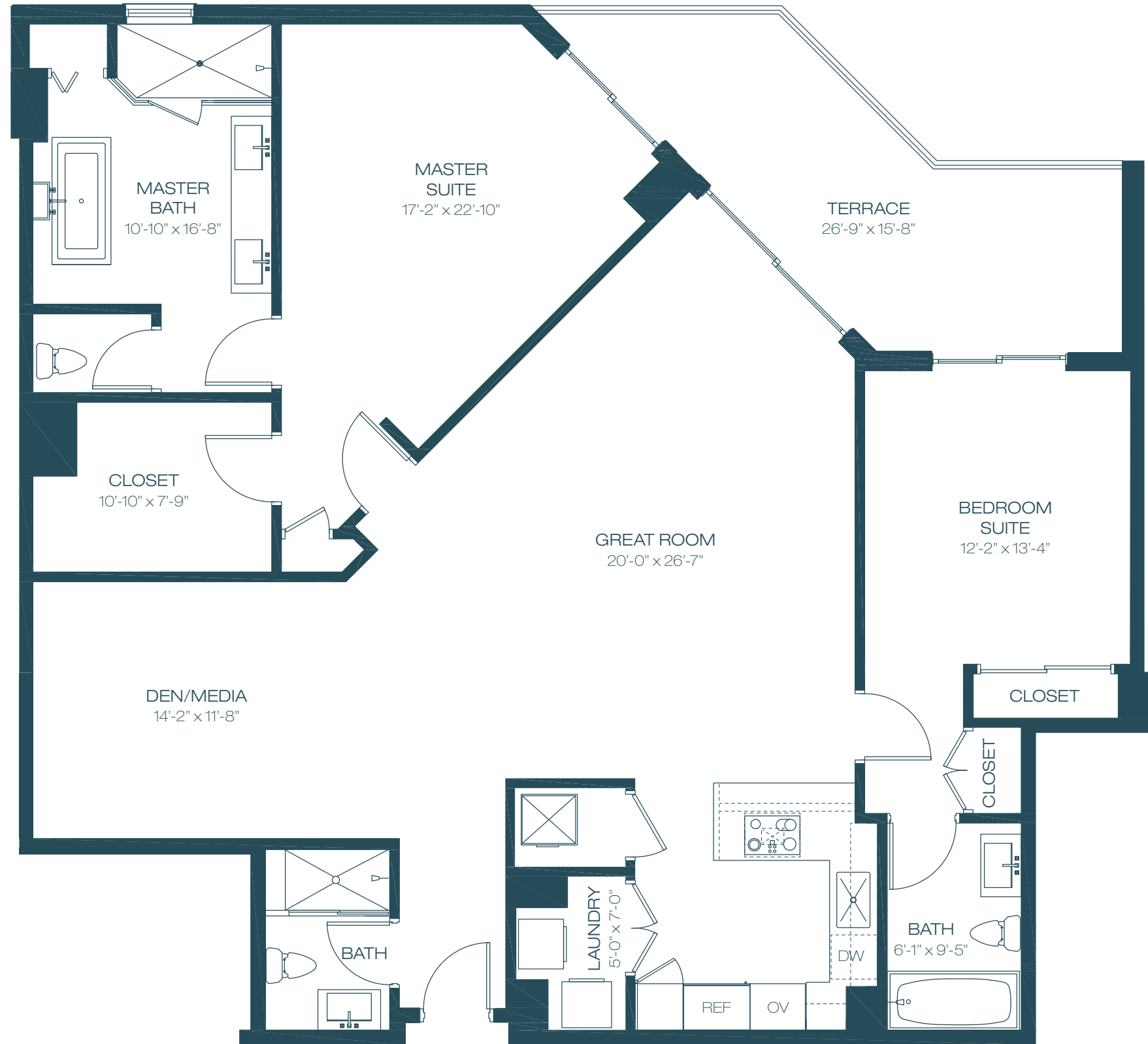
2	BEDROOMS	2	BATHROOMS
INTERIOR	1,904 SF	177 M <sup>2</sup>	
TERRACE	169 SF	16 M <sup>2</sup>	
-----		-----	
TOTAL	2,073 SF	193 M <sup>2</sup>	

17201 BISCAYNE BOULEVARD, NORTH MIAMI BEACH, FL 33160 P 1 866 990 1800 MARINAPALMS.COM



N  
↑  
KEY PLAN - UNIT LOCATION

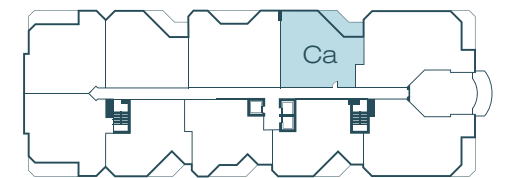




**UNIT Ca**

2	BEDROOMS + DEN	3	BATHROOMS
INTERIOR	1,893 SF		176 M <sup>2</sup>
TERRACE	214 SF		20 M <sup>2</sup>
<hr/>			
TOTAL	2,107 SF		196 M <sup>2</sup>

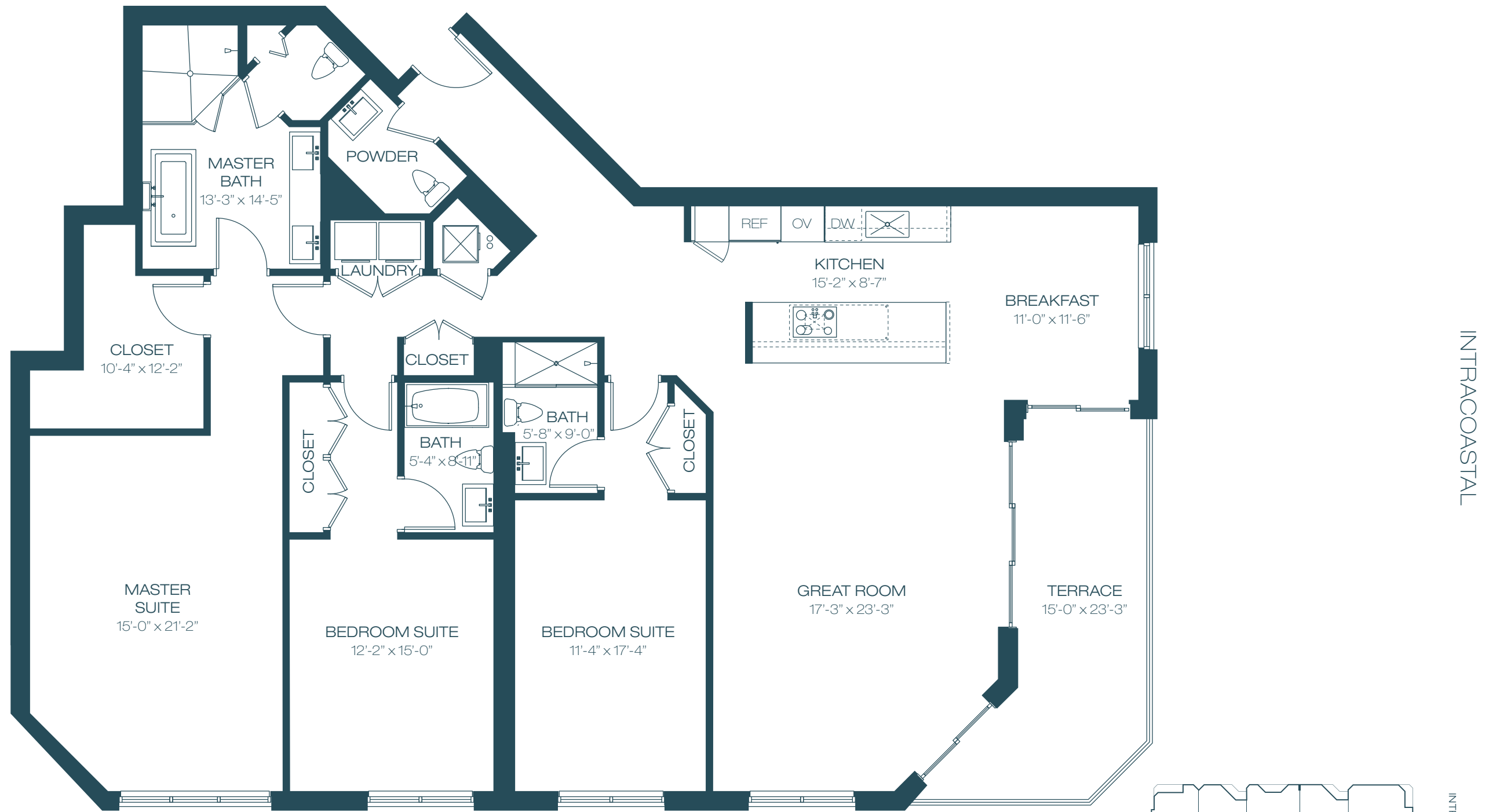
17201 BISCAYNE BOULEVARD, NORTH MIAMI BEACH, FL 33160 P 1 866 990 1800 MARINAPALMS.COM



N  
↑  
KEY PLAN - UNIT LOCATION

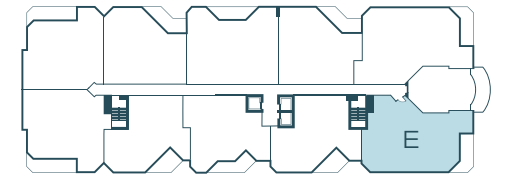
INTRACOASTAL

INTRACOASTAL



**UNIT E**

3	BEDROOMS	3.5	BATHROOMS
INTERIOR		2,421 SF	225 M <sup>2</sup>
TERRACE		203 SF	19 M <sup>2</sup>
TOTAL		2,624 SF	244 M <sup>2</sup>



17201 BISCAYNE BOULEVARD, NORTH MIAMI BEACH, FL 33160 P 1 866 990 1800 MARINAPALMS.COM

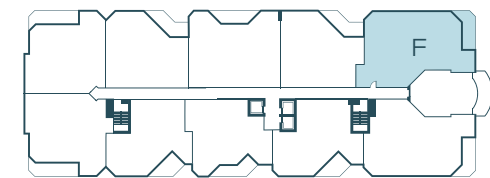
N  
↑  
KEY PLAN - UNIT LOCATION

All dimensions are approximate and all floor plans and development plans are subject to change. This floor plan represents the typical floor plan for the residence type indicated and is provided for informational purposes only. The actual floor plan of the residence may differ. All features listed for the residences are representative only, and the Developer reserves the right, without notice to or approval by the Buyer, to make changes or substitutions of equal or better quality for any features, materials and equipment. All dimensions are taken to the outside finished surface of the exterior walls, and to the centerline of interior demising walls, and vary from the dimensions that would be determined based upon the description of the "Unit" set forth in the Declaration of Condominium (which generally includes only the interior airspace between the unfinished interior surfaces of the walls bounding the unit). All sketches, renderings, graphic materials, plans, specifications, terms, conditions, and statements contained in this brochure are proposed and conceptual only and do not necessarily reflect the final plans and specifications for the development. Further, developer reserves the right to modify, revise, or withdraw any or all of sale in its sole discretion and without prior notice.



**UNIT F**

3	BEDROOMS	3.5	BATHROOMS
INTERIOR		2,599 SF	241 M <sup>2</sup>
TERRACE		203 SF	19 M <sup>2</sup>
TOTAL		2,802 SF	260 M <sup>2</sup>

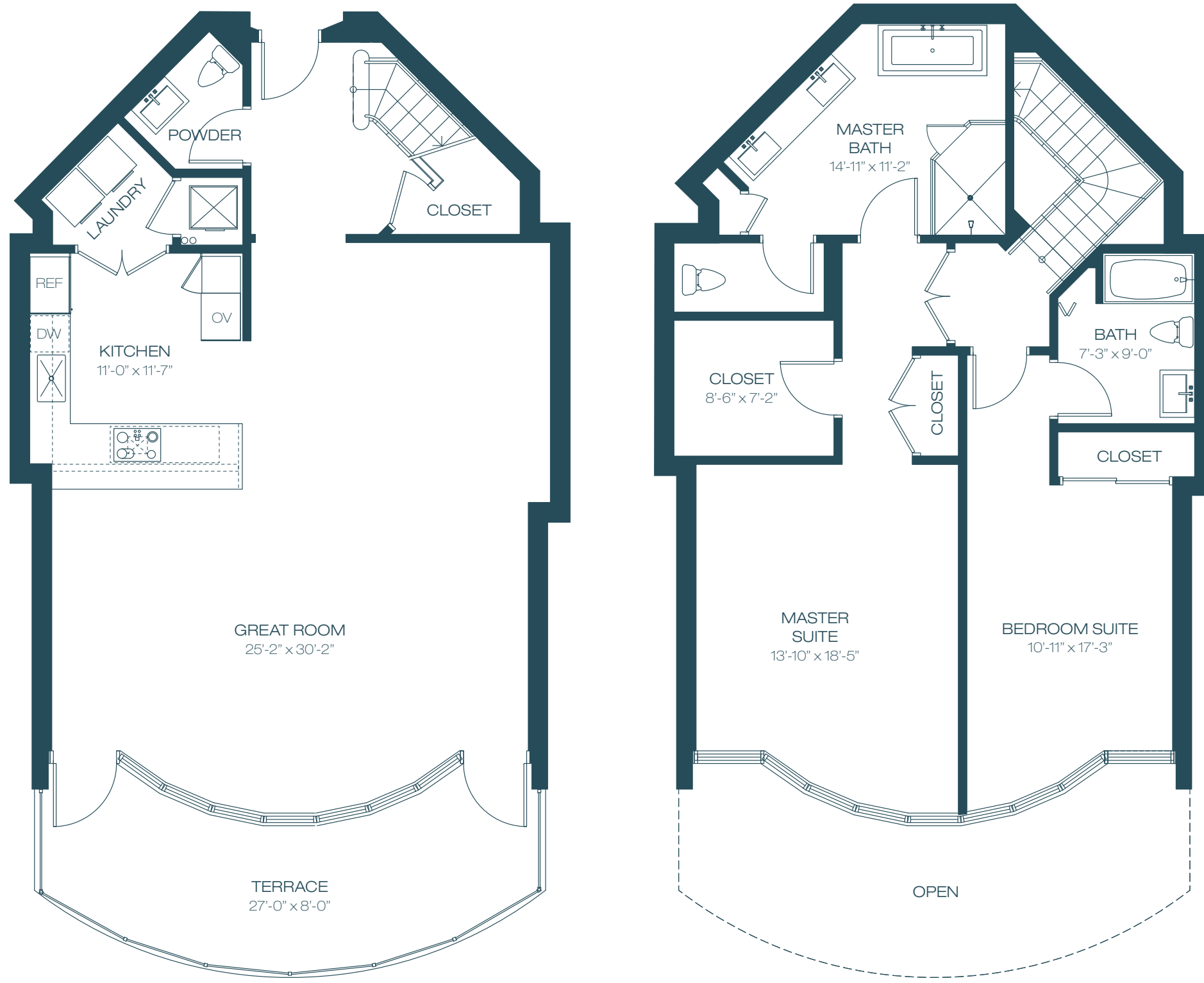


MARINA



KEY PLAN - UNIT LOCATION

17201 BISCAYNE BOULEVARD, NORTH MIAMI BEACH, FL 33160 P 1 866 990 1800 MARINAPALMS.COM

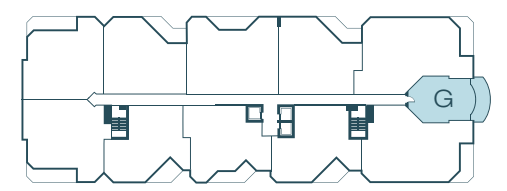


**UNIT G**

2	BEDROOMS	2.5	BATHROOMS
INTERIOR		2,080 SF	193 M <sup>2</sup>
TERRACE		216 SF	20 M <sup>2</sup>
-----		-----	
TOTAL		2,296 SF	213 M <sup>2</sup>

**INTRACOASTAL**

17201 BISCAYNE BOULEVARD, NORTH MIAMI BEACH, FL 33160 P 1 866 990 1800 MARINAPALMS.COM



**N**  
**KEY PLAN - UNIT LOCATION**

All dimensions are approximate and all floor plans and development plans are subject to change. This floor plan represents the typical floor plan for the residence type indicated and is provided for informational purposes only. The actual floor plan of the residence may differ. All features listed for the residences are representative only, and the Developer reserves the right, without notice to or approval by the Buyer, to make changes or substitutions of equal or better quality for any features, materials and equipment. All dimensions are taken to the outside finished surface of the exterior walls, and to the centerline of interior demising walls, and vary from the dimensions that would be determined based upon the description of the "Unit" set forth in the Declaration of Condominium (which generally includes only the interior airspace between the unfinished interior surfaces of the walls bounding the unit). All sketches, renderings, graphic materials, plans, specifications, terms, conditions, and statements contained in this brochure are proposed and conceptual only and do not necessarily reflect the final plans and specifications for the development. Further, developer reserves the right to modify, revise, or withdraw any or all of sale in its sole discretion and without prior notice.